

**Table of Contents**

**Chapter News**

Reclamation Certificates.....Page 2  
 2023 Service Awards.....Page 3  
 NOPHCGNO Greek Cookout.....Page 4  
 Omega Chapter - Bro. Ronald Butler.....Page 5  
 Initiation Anniversaries.....Page 6

**International News**

Revised Member Code of Conduct.....Page 7  
 Omega Network For Action.....Page 8

**Ninth District News**

September Que Tips.....Page 10  
 Death Benefit Program.....Page 15  
 Contact Us.....Page 16



**Bro. Adrian Thibodeaux**  
**Basileus**



# Reclamation Certificates

September 5, 2023— Rho Phi chapter issued Reclamation Certificates to 2022-2023 reclaimed brothers: Derrick Joshua, Darrell Brown and Dwight Jarrett, Jr. The presentations were made at the September, 2023 business meeting. Note: Bro. Dwight Jarrett, Sr. accepted the certificate on behalf of his son. The OWTstanding certificates were created by Bro. Ryan Banks.



# 2023 Service Awards

September 25, 2023— Rho Phi Chapter presented Service Awards pins and certificates to the following Brothers:

70 Years—Bro. August James

60 years—Bro. Charles Brown

55 years—Bro. Michael Wingate, Sr.



# Pan-Hellenic Council Greater New Orleans Chapter Greek Cookout

September 23, 2023— The National Pan Hellenic Council's Greater New Orleans Chapter held its annual Greek Cookout at Joe Brown Park. All of the attendees from the Divine 9 enjoyed fun, food and fellowship. Note: More pictures are posted on the chapter's website: <https://rhophi.org/photos>



# Omega Chapter

## Bro. Ronald Butler



### **“WHEN WE WEAR THE GLOVES”**

**When we wear the gloves  
A brother has gone from our midst  
And sailed to golden shores.**

**When we wear the gloves  
A friend has passed the final test  
And walks through purple doors.**

**The circle has an empty place  
A voice will raise no more  
The song of fellowship and love  
Uplift forevermore**

**When we wear the gloves  
When we wear the gloves  
A light goes from this earthly life  
The visor closed again  
Yet all the heavens open wide  
To let a new star in**

**When we wear the gloves  
A brother leaves the chapter rolls  
And moves to other worlds  
For when we say our last goodbye  
He walks on streets of Pearls.**

**When we wear the gloves.**

**by Brother Dr. Carver A. Portlock**



**Bro: Ronald J. Butler**

**Initiation Date: 7/15/1972**

**Omega Chapter: 09/17/2023**

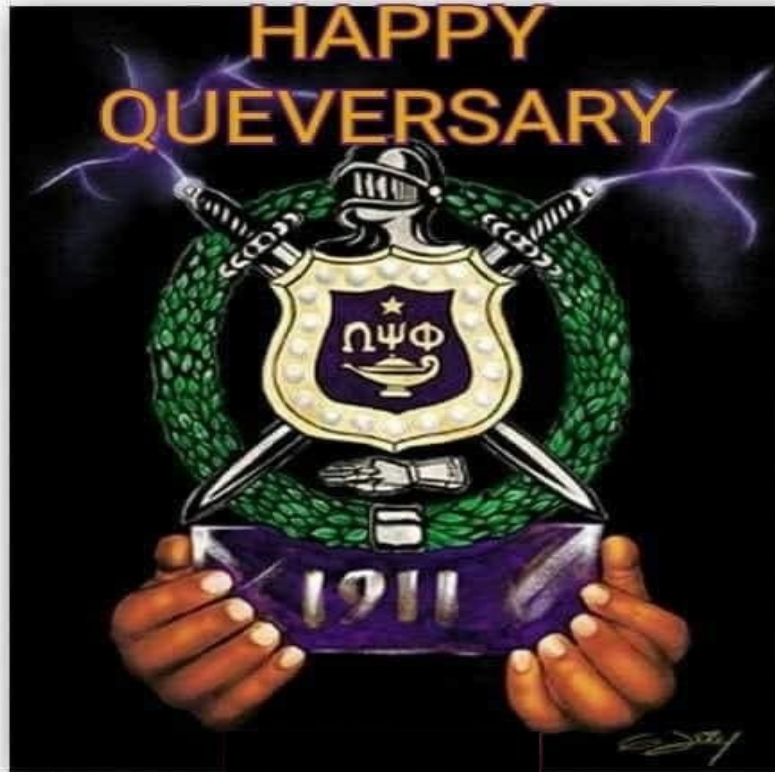
# Initiation Anniversary

Congratulations to the following active Rho Phi chapter brother on the anniversary of his initiation into Omega Psi Phi Fraternity, Inc. in September.

Bro. Bobby Major III

Xi Sigma

September 30, 1989



# International News

## Revised Member Code of Conduct



### OMEGA PSI PHI FRATERNITY, INC.

International Headquarters  
3951 Snapfinger Parkway Decatur, GA 30035  
Telephone: (404) 284-5533 Fax: (404) 284-0333

WWW.OPPF.ORG  
@OFFICIALOPPF  
@OFFICIALOMEGAPSIPII

September 13, 2023

Greetings Brothers,

I hope this message finds you all in good health and high spirits. It's a privilege to address as the Executive Director of a group of men dedicated and committed to each other. Our Brotherhood thrives on friendship and the shared principles that bind us together.

Today, I'm thrilled to share with you, the revised Member Code of Conduct, a document that captures the very essence of our Brotherhood and the values we stand for. This Member Code of Conduct is more than just a set of rules and guidelines; it's a symbol of our collective dedication to honor, integrity, and the betterment of ourselves and our community.

You can download the member code of conduct by using this [Member Code of Conduct](#) link.



Thank you for reviewing this document and being accountable to the value of the brand.

With Respect,

A handwritten signature in black ink that reads "John Howard". The signature is written in a cursive style.

John Howard  
Executive Director  
The Omega Psi Phi Fraternity, Inc.

### To Download MCOC

- 1) Log into International Headquarters <https://oppf.org>
- 2) Click on the Link below

[Members Code of Conduct](#)

# International News

## Omega Network For Action



### JAMES E. CLYBURN LEADERSHIP INSTITUTE

september 2023  
contact: cheryl wann  
phone: 410-462-4818/8708  
email: [cmann@omeganetworkforaction.org](mailto:cmann@omeganetworkforaction.org)  
web: [omeganetworkforaction.org](http://omeganetworkforaction.org)  
socials: [@omeganetworkforaction](https://www.instagram.com/omeganetworkforaction)

#### **OMEGA NETWORK FOR ACTION, INC. WILL LAUNCH THE JAMES E. CLYBURN LEADERSHIP INSTITUTE AT THE CBCF'S 52<sup>ND</sup> ANNUAL LEGISLATIVE CONFERENCE**

*ONFA Accepted Nine Fellows For the Inaugural Class of the Clyburn Leadership Institute, A 12-Month Cohort for Educating & Training Those Who Aspire to Hold Elected Office*

Washington, D.C.—**Omega Network For Action, Inc.** (ONFA) is a 501(c)(4) created to help African Americans and others in underserved communities achieve their highest true social parity, economic self-reliance, power, and civil rights. In furtherance of its mission, ONFA established the **James E. Clyburn Leadership Institute** (JECLI) in 2021. With an emphasis on education, the Clyburn Leadership Institute will provide participants with tools as well as guidance for running effective and ethical campaigns that result in goal achievement: winning elected office.

Established in the name of political mainstay Congressman James E. Clyburn of South Carolina, the Clyburn Leadership Institute offers a 12-month cohort model. JECLI programming will cover numerous topics ranging from Campaign Financing to Organizing Principles to Coalition Building. The Clyburn Leadership Institute will operate as a training arm of Omega Network For Action with the primary purpose of cultivating the next generation of African American legislative leaders.

"We have a phenomenal class, a great group of individuals who are set to make effective changes in their communities" says ONFA Board Chair and President, **Dr. David E. Marion**. "I look forward to witnessing the collective achievements of this inaugural class. As stewards of their respective communities, they represent the best. I applaud their drive to seek elected office with an eye on affecting positive change, all of which is rooted in a commitment to service."

Since 2020, ONFA has implemented a Get Out the Black Male Vote initiative, endorsed winning candidates such as Senators Reverend Raphael Warnock (GA) and Mark Kelly (AZ), plus held virtual town halls nationwide as a means of empowerment. ONFA will advance its mission via the Leadership Institute which will facilitate the emergence of decision makers, who will create more equitable policies for African Americans and other traditionally underrepresented groups.

The JECLI's first official meeting will take place on Wednesday, September 20, 2023, during the Congressional Black Caucus Foundation's 52<sup>nd</sup> Annual Legislative Conference. The day-long intensive workshop will feature sessions touching upon African Americans throughout history, America's political history, polling, and includes a Spotlight Panel that will discuss top priorities for the 2024 U.S. political landscape.

[jecli@omeganetworkforaction.org](mailto:jecli@omeganetworkforaction.org)  
[www.omeganetworkforaction.org](http://www.omeganetworkforaction.org)



# International News

## Omega Network For Action

Announcement: ONFA Launches Clyburn Leadership Institute  
September 2023 | Page 2

The first group of JECLI Fellows represents California, the United States' Mid-Atlantic, Midwest, Southeast, and Southern regions. As a body, the Fellows' credentials are impressive with varied interest in all levels of elected office. An underlying theme of this cohort is to foster equity that delivers economic development to their constituencies. Members of the James E. Clyburn Leadership Institute's first cohort are as follows:

Rhonda Bailey (Mississippi)	Stephanie Hall (Maryland)
Gregory Burnett, Sr. (Connecticut)	Harold M. Love, Jr., PhD (Tennessee)
Brian L. DeShields (North Carolina)	Dr. Nkiruka Catherine Ohaegbu (DBA) (California)
Monifa D. Drayton (North Carolina)	Traci Smith-Kimes (Florida)
Kevin Ford, Jr. (Maryland)	

Congressman Clyburn has been quoted as saying “[w]e must not sit idly by and let things happen,” and in that vein ONFA acknowledges the generosity of our 2023 Workshop sponsors: **Kendrick B. Meek**, Senior Advisor with **King & Spalding, LLP**; **Johnnie Smith**, Owner of **STS Tax Services Inc.**; **Cisco Systems, Inc.**; **D4 Women in Action, Inc.**; and **Sedrick M. Spencer**, Partner with **Cal2NewOrleans**.

### September 2023 JECLI Workshop Sponsors



For more info about the James E. Clyburn Leadership Institute or to become a sponsor, send an email to [jecliinstitute@omeganetworkforaction.org](mailto:jecliinstitute@omeganetworkforaction.org). To support Omega Network For Action, Inc. and learn how to become an integral part of achieving parity for all, please contact ONFA Executive Director Cheryl Mann at [cmann@omeganetworkforaction.org](mailto:cmann@omeganetworkforaction.org).

###

#### ABOUT OMEGA NETWORK FOR ACTION, INC.

With the U.S. political landscape as a backdrop, Omega Network For Action, Inc. is a 501(c)(4) that operates exclusively to aid routinely disadvantaged groups. ONFA endeavors to help African Americans—and others from underserved communities—navigate the political process through advocacy and education, then promoting economic self-reliance by elevating power that helps to preserve civil rights. ONFA's signature education program is the James E. Clyburn Leadership Institute. Visit ONFA's website, [omeganetworkforaction.org](http://omeganetworkforaction.org), to learn more and support future ventures. Find, Follow, and Like Omega Network For Action (@OmegaForAction) on LinkedIn, Instagram, Twitter, Facebook, and YouTube.

#### ABOUT THE JAMES E. CLYBURN LEADERSHIP INSTITUTE

Developers of the James E. Clyburn Leadership Institute believe that African Americans should not only have the opportunity to fulfill their civic duties as public servants, but also have the requisite skill set to successfully do so. Serving as the training arm for the cultivation of the next generation of African American elected leaders, the JECLI will offer a 12-month cohort for educating and training those who aspire to hold elected office. Call +1 646.481.8708 or send an email to [jecliinstitute@omeganetworkforaction.org](mailto:jecliinstitute@omeganetworkforaction.org) requesting information.



[jecliinstitute@omeganetworkforaction.org](mailto:jecliinstitute@omeganetworkforaction.org)  
[www.omeganetworkforaction.org](http://www.omeganetworkforaction.org)

# Ninth District News

## September Healthy Que Tips

### Omega Psi Phi Fraternity, Incorporated MIGHTY NINTH DISTRICT Healthy Que Tips

Medical-Health Initiatives Committee

September 2023



#### Ninth District Health Initiatives

1. Stay Safe, Healthy, and Physically Active
2. Brother, You're On My Mind (Mental Health Awareness)
3. Partner with a Non-Profit Health Organization (Diabetes, AIDS, Prostate Cancer, Sickle Cell Disease, Heart Disease, St. Jude)
4. A Brother's Keeper: Support Friends/Families affected by illnesses
5. Sponsor a Blood Drive and/or Health Fair
6. Follow CDC Coronavirus Guidance at [www.cdc.gov](http://www.cdc.gov)
7. Highlight Monthly Health Initiatives (during fraternity meetings)

#### NATIONAL PROSTATE CANCER AWARENESS MONTH

Prostate cancer is a form of cancer that develops in the prostate gland. It is the second-leading cause of cancer deaths for men in the U.S. About 1 in 9 men will be diagnosed with prostate cancer in their lifetime (250,000 men/year). The prostate is a small walnut shaped gland in the pelvis of men (below the bladder). The prostate and seminal vesicles are a part of the male reproductive system that make fluid to bathe semen. Growths in the prostate can be benign (not cancer like benign prostatic hyperplasia/BPH) or malignant (cancer). Prostate cancer cells can spread by breaking away from a prostate tumor and traveling through blood vessels or lymph nodes to reach other parts of the body.

In its early stages, prostate cancer often has no symptoms. When symptoms do occur, they can be like those of an enlarged prostate or BPH. Symptoms of prostate cancer can be: dull pain in lower pelvic area, frequent urination, trouble urinating (pain, burning, weak flow), blood in urine, painful ejaculation, loss of appetite/weight. Risk factors include: age, ethnicity, family history, smoking, diet. The two main types of screening are: prostate-specific antigen (PSA) blood tests and digital rectal exams (DRE). For more information regarding (stages of prostate cancer and treatment), see [www.urologyhealth.org/urologic-conditions/prostate-cancer](http://www.urologyhealth.org/urologic-conditions/prostate-cancer).

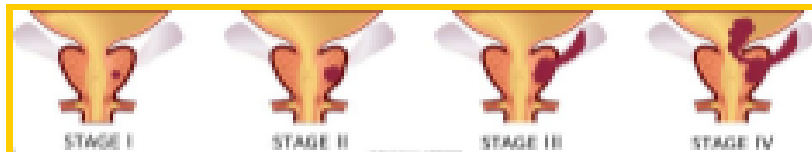
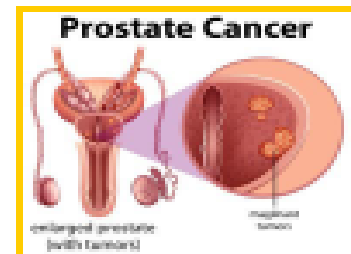
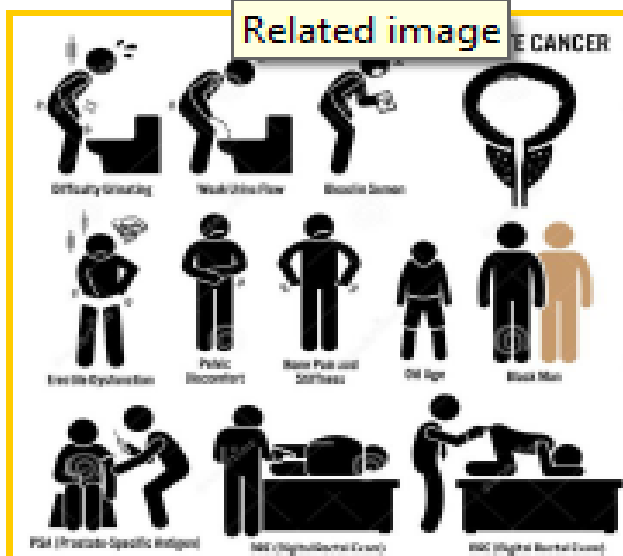
# Ninth District News

## September Healthy Que Tips

### Omega Psi Phi Fraternity, Incorporated MIGHTY NINTH DISTRICT Healthy Que Tips

Medical-Health Initiatives Committee

September 2023, Page 2



### Ninth District Healthy Events:

September is also Childhood Obesity Month, National Recovery Month, Sickle Cell Awareness Month (See Page 3), & Atrial Fibrillation Awareness Month (See Page 4)!  
Also, see Page 5 for Monkeypox information!

Quegratulations to Rho Omega and Xi Omega Chapters!

Have **Healthy** and **Safe** Centennial Celebrations!!

Have a **Healthy** and **Safe** Labor Day (September 4<sup>th</sup>)!

# Ninth District News

## September Healthy Que Tips

### Omega Psi Phi Fraternity, Incorporated MIGHTY NINTH DISTRICT Healthy Que Tips

Medical-Health Initiatives Committee

September 2023, Page 3

**WHAT is Sickle Cell?** Sickle cell means round red blood cells turn into a shape like a sickle or a crescent moon by mutating a protein in red blood cells, called hemoglobin.

**NORMAL RED BLOOD CELL**

- Healthy
- Round
- Flexible
- Last 120 days

**SICKLE CELL**

- Stiff
- Sticky
- Last 10-20 days

Stiffened blood cells get stuck in the small blood vessels, causing tissue damage and severe pain.

**(SICKLE CELL Disease and its facts)**

**Global distribution of the sickle cell gene.**  
Sickle cell is one of the most common genetic disorders in the world.

**Sickle Cell or Malaria?** Carrying the sickle cell gene is an evolutionary advantage against malaria; the gene prevents the malaria parasite from fully invading red blood cells.

**HOW do you get it?** Sickle cell is genetic, meaning you can only be born with it and it is not contagious.

Each parent randomly gives their baby one of their hemoglobin genes.

25% Normal (25% Normal) (25% Normal)

50% Carrier (50% Carrier)

**WHO has Sickle Cell?** People of all races and ethnicities can inherit sickle cell. But it is more common in people of African, Southeast Asian, and Mediterranean heritage.

1 out of 500 African American births have sickle cell disease

1 out of 3,000 Hispanic American births have sickle cell disease

1 out of 5 African American carry the sickle cell trait

**WHEN to seek emergency?**

- Unexplained episodes of severe pain, such as pain in the abdomen, chest, bones or joints.
- Swelling in the hands or feet.
- Abdominal swelling, especially if the area is tender to touch.
- People with sickle cell anemia have an increased risk of infection, and fever can be the first sign of an infection.
- Pale skin or nail beds.
- Yellow tint to the skin or whites of the eyes.
- Any signs or symptoms of stroke. If you notice any one-sided paralysis or weakness in the face, arms or legs, confusion, trouble walking or talking, sudden vision problems or unexplained numbness, or a headache, call 911 or your local emergency number right away.

**SHOW SUPPORT SPREAD AWARENESS**

#### NATIONAL SICKLE CELL AWARENESS MONTH

Sickle Cell Disease (SCD) is a group of inherited red blood cell disorders. Healthy red blood cells are round, and they move through small blood vessels to carry oxygen to all parts of the body. In someone who has SCD, the red blood cells become hard and sticky and look like a C-shaped farm tool called a "sickle". The sickle cells die early, which causes a constant shortage of red blood cells. Also, when they travel through small blood vessels, they get stuck and clog the blood flow. This can cause pain and other serious problems such as infection, acute chest syndrome, vision loss, and stroke.

SCD is a genetic condition that is present at birth. It is inherited when a child receives two sickle cell genes—one from each parent. SCD is diagnosed with a simple blood test. It most often is found at birth during routine newborn screening tests at the hospital. Because children with SCD are at an increased risk of infection and other health problems, early diagnosis and treatment are important. There is no single best treatment for all people with SCD. Treatment options are different for each person depending on the symptoms. For more info, see [www.cdc.gov/ncbddd/sicklecell/facts.html](http://www.cdc.gov/ncbddd/sicklecell/facts.html)

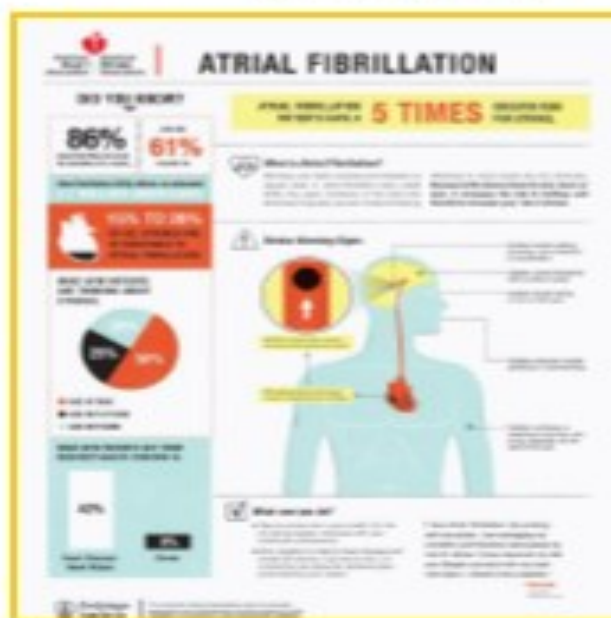
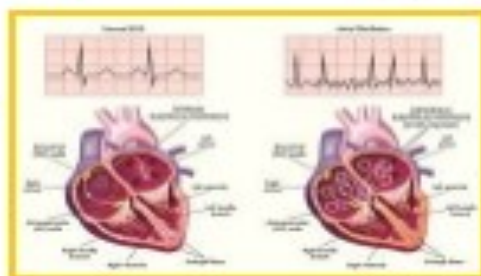
# Ninth District News

## September Healthy Que Tips

### Omega Psi Phi Fraternity, Incorporated MIGHTY NINTH DISTRICT Healthy Que Tips

Medical-Health Initiatives Committee

September 2023, Page 4



#### ATRIAL FIBRILLATION AWARENESS MONTH

Atrial fibrillation is the most common type of heart arrhythmia (irregular heartbeat) that can interrupt the normal flow of blood. This interruption means the condition puts you at risk of blood clots and stroke. The Centers for Disease Control and Prevention (CDC) estimates that 12.1 million U.S. adults will have atrial fibrillation (AFib or AF) by 2030. The American Heart Association estimates that 2.7 million U.S. adults currently have AFib. Atrial fibrillation may be temporary, may come and go, or may be permanent. It's also most common in adults over the age of 65. But with proper medical care, you can live a normal, active life.

With AFib, the two upper chambers of your heart (atria) are affected. This disrupts blood flow to the ventricles or the lower chambers, and then throughout the rest of your body. If left untreated, AFib can be deadly. Some common symptoms of atrial fibrillation include: heart palpitations, chest pain, fatigue, shortness of breath, weakness, lightheadedness, dizziness, fainting, confusion, intolerance to exercise.

Talk with a doctor about the following risk factors: increased age (the older you are, the higher your risk), being male, a family history of atrial fibrillation, heart disease, structural/congenital heart defects, pericarditis, history of heart attacks/surgery, thyroid conditions, obesity, lung disease, diabetes, drinking alcohol. For treatment information, see [www.healthline.com/health/living-with-atrial-fibrillation#risks](http://www.healthline.com/health/living-with-atrial-fibrillation#risks).

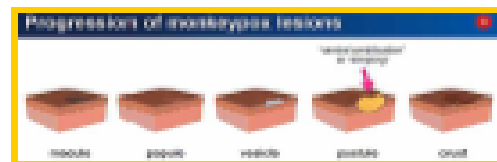
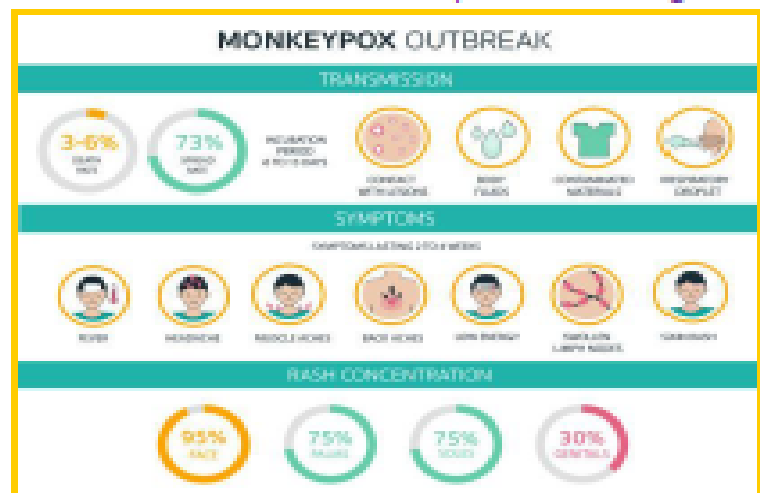
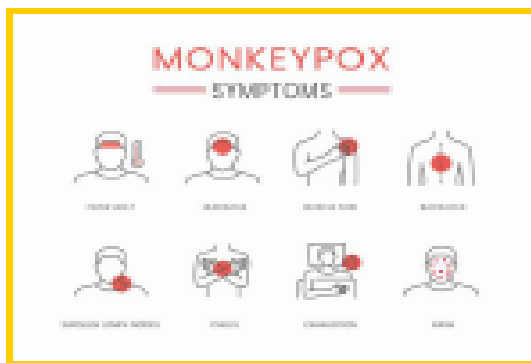
# Ninth District News

## September Healthy Que Tips

### Omega Psi Phi Fraternity, Incorporated MIGHTY NINTH DISTRICT Healthy Que Tips

Medical-Health Initiatives Committee

September 2023, Page 5



#### MONKEYPOX VIRUS

Monkeypox is a rare disease caused by infection with the monkeypox virus. Monkeypox virus is part of the same family of viruses as variola virus, the virus that causes smallpox. Monkeypox symptoms are similar to smallpox symptoms, but milder, and monkeypox is rarely fatal. People with monkeypox get a rash that may be located on or near the genitals or anus and could be on other areas like the hands, feet, chest, face, or mouth. Other symptoms of monkeypox can include: fever, chills, swollen lymph nodes, exhaustion, muscle aches and backache, headache, respiratory symptoms.

Monkeypox symptoms usually start within 3 weeks of exposure to the virus. If someone has flu-like symptoms, they will usually develop a rash 1-4 days later. Monkeypox can be spread from the time symptoms start until the rash has healed, all scabs have fallen off, and a fresh layer of skin has formed. The illness typically lasts 2-4 weeks.

Monkeypox can spread to anyone through close, personal, often skin-to-skin contact, including: direct contact with monkeypox rash, scabs, or body fluids from a person (can happen during intimate/sexual contact – hugging, kissing, massaging, face to face contact), touching contaminated objects, fabrics, surface, or contact with respiratory secretions. For information regarding prevention and treatment, please visit [www.cdc.gov/poxvirus/monkeypox/index.html](http://www.cdc.gov/poxvirus/monkeypox/index.html)

# Ninth District News

## Death Benefit Program

Greetings Brothers,

As we get closer to launching the first death benefit program in the Fraternity on November 1<sup>st</sup>, we are making the beneficiary selection form available on the website. Please take the time to enter the required information on the form. You will also have the option to donate the funds back to the District to assist families who may have a larger need.

Login at <http://mightyninth.com>. There will be a tab on your MYPAGE called "Death Benefit Info". Follow the instructions and click on the "SUBMIT" button when finished

### Ninth District Death Benefit Policy

The Ninth District's death benefit is a payout to the beneficiary of a member who has transitioned to Omega chapter. If a beneficiary selection has not been made, the committee will follow the following order:

1. Spouse (if married); then
2. Children in equal shares; then
3. Parents in equal share; then
4. Committee's recommendation with District Council approval

Brothers may also elect for the funds to stay with the district to benefit other families.

The Bereavement Sub-Committee will manage and administer the Ninth District death benefit fund.

The death benefit payout amount will be evaluated every 2 years by the committee. The committee will provide recommendations to the Ninth District Council on the payout amount and any policy changes. The Ninth District Council has the complete authority to set the annual payout amount and make policy changes that are in the best interest of the families and the Ninth District.

#### Eligibility Requirements

- Brother was financial the prior two years and must not be in a reclaimable status at the time of death.
- Brother must have resided in and be on a chapter roster within the 9<sup>th</sup> District at the time of death.
- Brother must not have been under any current or pending disciplinary action within the Fraternity.
- The Ninth District Council has the authority to waive any of the previous requirements through the Appeals/Disputes process.

#### Appeals/Disputes

All appeals/disputes will require a written request from the chapter basileus to be sent to the Committee for review. The Ninth District Council will make the final decision on all appeals and disputes.

## CONTACT US

For more information on Rho Phi Chapter send an email to:

Bro. Keith Taylor/Chapter Reporter: [reporter@rhophi.org](mailto:reporter@rhophi.org)

Visit us on the web: <https://rhophi.org>

Ninth District website: <https://mightyninth.com>

International website: <https://oppf.org>

Or the chapter's social media sites:

Facebook: <https://www.facebook.com/rhophinola>

Twitter: <https://twitter.com/RhoPhiOPP>

Instagram: <https://www.instagram.com/rhophiomegas>