



Omega Psi Phi Fraternity, Inc.

# Rho Phi Chapter

New Orleans, LA



“Friendship Is Essential To The Soul”

September, 2022

## In This Issue

### Chapter News

- ◆ Lest We Forget....
- ◆ Well Prepared Program Donation to Mary Bethune School
- ◆ Omega Chapter—Bro. Roger Hickson
- Initiation Anniversary
- Congratulations:
  - Basileus Charles Allen III
  - Bro. Jay H. Banks
  - Bro. Marion Floyd
  - Bro. Mark Raymond Sr.
  - Vice Basileus Adrian Thibodeaux
  - Bro. Clarence Verdin

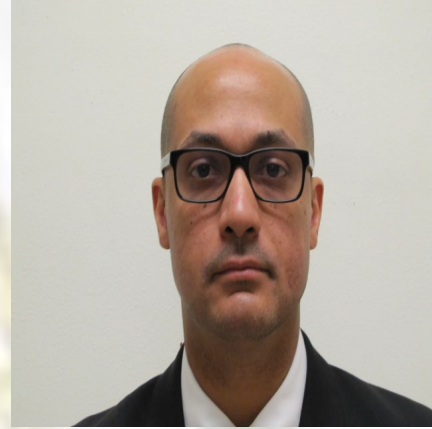
### International News

- International High School Essay Contest

### Ninth District News

- Prostate Cancer Awareness Update Webinar
- 2nd Annual Voter Registration Day
- Healthy Que Tips

- Contact Us



**Bro. Charles Allen III**

**Basileus**

### **Rho Phi Chapter 2021-2022 Officers:**

**Basileus:** Bro. Charles Allen III

**Vice-Basileus:** Bro. Adrian Thibodeaux

**Keeper of Records and Seal:** Bro. Darrin Browder

**Asst. Keeper of Records and Seal:** Bro. Ryan Banks

**Keeper of Finance:** Bro. Bobby Major III

**Keeper of Peace:** Bro. Steve Crandle

**Reporter:** Bro. Keith Taylor Sr.

**Chaplain:** Bro. Michael Raymond

**Parliamentarian:** Bro. Kyle Augillard

**Chapter Counselor:** Bro. Marion Floyd

**Immediate Past Basileus:** Bro. Jerome Tinguee

### **Other Fraternity Officers:**

**S.E. Louisiana State Representative:** Bro. Terrence Augillard

## Lest We Forget.....



On August 14, 1883, Ernest Everett Just, pioneering biologist and one of the founders of the Omega Psi Phi Fraternity, Inc., was born in Charleston, South Carolina. Just earned his Bachelor of Arts degree magna cum laude from Dartmouth College in zoology in 1907. After graduating and encountering the reality that it was almost impossible for an African-American to join the faculty of a white college or university, Just accepted a position at Howard University. On November 17, 1911, Just served as the academic advisor to three Howard students in establishing the Omega Psi Phi Fraternity, Inc. In 1912, Just was appointed head of the Department of Zoology at Howard, a position he held until his death on October 27, 1941. Just was the first recipient of the NAACP Spingarn Medal in 1915 and the next year earned his Ph. D. in zoology from the University of Chicago. In 1930, he became the first American to be invited to the Kaiser Wilhelm Institute in Berlin, Germany where several Nobel Prize winners conducted research. He wrote the important textbook "Biology of the Cell Surface" in 1939. Just's biography, "Black Apollo of Science: The Life of Ernest Everett Just", was published in 1983. The book received the 1983 Pfizer Award and was a finalist for the 1984 Pulitzer Prize for Biography or Autobiography. In 1996, the United States Postal Service issued a commemorative postage stamp in his honor. Beginning in 2000, the Medical University of South Carolina has hosted the annual Ernest E. Just Symposium to encourage non-white students to pursue careers in biomedical sciences and health professions. And, the Ernest Everett Just Middle School in Mitchellville, Maryland is named in his honor.



# Well Prepared Program Donation

September 2, 2022—Rho Phi Chapter presented a check for \$500.00 to the culinary department at Mary Bethune School of Science and Technology. The chapter received a grant from the fraternity's Well Prepared Program initiative. The program is a partnership with the National Institute of Health and Omega Psi Phi Fraternity Inc. to promote healthy eating habits.





# CHAPTER NEWS

## Omega Chapter



### **“WHEN WE WEAR THE GLOVES”**

**When we wear the gloves  
A brother has gone from our midst  
And sailed to golden shores.**

**When we wear the gloves  
A friend has passed the final test  
And walks through purple doors.**

**The circle has an empty place  
A voice will raise no more  
The song of fellowship and love  
Uplift forevermore  
When we wear the gloves  
When we wear the gloves  
A light goes from this earthly life  
The visor closed again  
Yet all the heavens open wide  
To let a new star in**

**When we wear the gloves  
A brother leaves the chapter rolls  
And moves to other worlds  
For when we say our last goodbye  
He walks on streets of Pearls.**

**When we wear the gloves.**

**by Brother Dr. Carver A. Portlock**



**Bro. Roger Hickson**

**Initiated: Rho Phi - 03/12/2005**

**Omega Chapter - 08/10/2022**



# Initiation Anniversary

Congratulations to the following Rho Phi chapter brother on the anniversary of his initiation into Omega Psi Phi Fraternity, Inc. in September.

September 30, 1989 — Bro. Bobby Major III — Xi Sigma



# Congratulations

- ◆ Basileus Charles Allen III for being featured in a Washington Post article entitled “In a New Orleans ward ravaged by climate change, leaders nurture the next generation”. Basileus Allen III is a co-founder of The Center for Sustainable Engagement and Development, also known as Sustain the Nine. The organization embraces community as a climate solution and works to teach residents about their environment and how to use science, conservation and sustainable practices to enrich and protect it. The group was formed in the aftermath of Hurricane Katrina.
- ◆ Bro. Jay H. Banks on his new position as an Urban Policy Specialist for the city of New Orleans.
- ◆ Bro. Marion Floyd on his selection by the Grand Counselor, Bro. Clement Osimentha, as Co-chairman of the Trademark/Brand/Image Enforcement Committee.
- ◆ Bro. Mark Raymond Sr. and his wife, Rhonda on the selection of their son, Mark Raymond Jr. as the new Chairman of the Regional Transit Authority (RTA) board.
- ◆ Vice-Basileus Adrian Thibodeaux on his retirement as a Physical Security Specialist for the Internal Revenue Service (IRS). He also served 23 years in the U.S. Marine Corp.
- ◆ Bro. Clarence Verdin and his wife, Carolyn on their selection by the University of Louisiana at Lafayette’s Christiana Smith African American Alumni chapter as recipients of the 2022 Outstanding Graduates award. The awards will be presented to them and other award recipients at a reception that will be held on Saturday, October 1, 2022.



Congratulations!

# International News

## International High School Essay Contest



Omega Psi Phi Fraternity, Inc.

is pleased to announce its annual

### International High School Essay Contest

As a mandated element of the Annual International Achievement Week Observance

#### Four College Scholarship Awards:

1st Scholarship: \$5,000; 2nd Scholarship: \$3,000; 3rd Scholarship: \$2,000; 4th Scholarship: \$1,000

**Contest Closes: October 21, 2022**

*2022 Essay Title:*

*A world crisis has caused a paradigm shift for health disparities and social justice; what are your suggestions for positive change?*

#### Eligibility & Rules

The Contest is open to all college-bound, high school seniors who submit an essay application through a Chapter of the Fraternity.

The essay must be original and neither previously published nor secured by copyright. The essay must be between 700 and 750 words in length. The type-written, double-spaced essay may be submitted via postal service or email in Microsoft Word.

#### Submission Process

All submissions will be reviewed by your local Chapter (determined by your high school/home address). Submissions will not be accepted after **October 21, 2022**. **Do not change or shorten the Essay Topic.**

The following information for the contestant must appear on the first page in this manner:

Title: \_\_\_\_\_  
An Essay By: \_\_\_\_\_ Home Street Address: \_\_\_\_\_  
City, State, Zip Code: \_\_\_\_\_ Name of High School: \_\_\_\_\_  
Address of High School: \_\_\_\_\_  
Student Email: \_\_\_\_\_ Phone # \_\_\_\_\_  
Contest Name: Omega Psi Phi Fraternity International High School Essay Contest  
Name of Sponsoring Chapter: \_\_\_\_\_ Location of Chapter: \_\_\_\_\_

The manuscript must be postmarked or time stamped on the email not later than midnight, October 21, 2022, and sent to an Omega Psi Phi Chapter Sponsoring the Essay Contest.

Essays are not to be sent to the Fraternity's Headquarters facility and any received there will be considered ineligible.



**Rating  
Criteria**

All local Chapters will assemble a review panel to assess submitted essays based on the following criteria. Essays may earn a maximum rating of 100 points.

**1. Development of Topic/Thesis: (30 possible points)**

Topic is well-developed (covers and develops major points, supplying enough information for understanding)

**2. Progression: (20 possible points)**

Composition progresses from beginning to end in a logical flow of information

**3. Readability: (25 possible points)**

Concise prose that sticks to the point and does not ramble (holds reader's attention)

**4. Grammar: (15 possible points)**

Agreement of subject and verb; proper tense; correct sentence construction; paragraphing, including transitional phrases linking same

**5. Spelling: (5 possible points)**

**6. Punctuation: (5 possible points)**

**Additional  
Information**

Persons submitting manuscripts thereby grant to the Omega Psi Phi Fraternity, Inc. the right to keep the manuscripts and to exercise full publishing rights to them. Awards will be announced on or about June 1, 2023, and the decision of the judges will be final. The manuscripts must present an adequate treatment of the essay topic. Winners may be required to furnish written proof that they were enrolled in their respective high school at the time the essay was submitted. Awards will be submitted to each winner, upon written verification from an institution of higher education that the individual has enrolled. Actual enrollment (not just acceptance) is required. Awards must be claimed within 18 months after the announcement date to be valid.

**Local  
Chapter  
Contact**

Local Chapter Name \_\_\_\_\_

Bro. \_\_\_\_\_

Email \_\_\_\_\_



# Ninth District News

## Prostate Cancer Awareness Update Webinar



Global Health and Community Service, Inc. and the Florida Statewide Organization of Omega Psi Phi Fraternity, Inc. will host a Free Television Program entitled "Prostate Cancer Awareness Update" featuring social media sensation and host, Kitty Lundan. The Webinar will be held on Saturday, September 10, 2022 at 12:00 noon (EST) via virtual platform. Please click on the link below to REGISTER TODAY for the Free Webinar:

<https://www.eventbrite.com/e/prostate-cancer-treatment-options-tickets-398676089917>

**Brother Willie Carpenter** will share his journey with prostate cancer. He will share the very moment he received the diagnosis from his doctor and the difficult choice he had to make going forward. Hear what happened next.

### Some of the topics of discussion :

- What causes prostate cancer and prostatitis?
- Is the DRE more accurate than the PSA examination?
- Why do some men fear the prostate examination?
- What questions should men ask their doctor?
- How should men prepare for the prostate examination?
- If prostate cancer causes ED, what are the available treatment options.
- How do we encourage brothers to go to the doctor?
- Should one have the surgery?

If you have any questions, please call 561-247-4109 or [JJONES@GHACSI.ORG](mailto:JJONES@GHACSI.ORG)

# Ninth District News

## Second Annual Voter Registration Day

August 27, 2022—The Ninth District held its second annual Voter Registration Day throughout the 4 state area. This event was held to register new voters and as a reminder to registered voters the importance of voting in every election in your area.





# Ninth District News

## Healthy Que Tips

### Omega Psi Phi Fraternity, Incorporated MIGHTY NINTH DISTRICT Healthy Que Tips

Medical-Health Initiatives Committee

September 2022



#### Ninth District Health Initiatives

1. Stay Safe and Healthy
2. Follow Area CDC Coronavirus Guidelines at [www.cdc.gov](http://www.cdc.gov) (Vaccinations, Social Distancing, Wearing Masks, Washing Hands)
3. Brother, You're On My Mind (Mental Health Awareness)
4. Partner with a Non-Profit Health Organization (Diabetes, AIDS, Prostate Cancer, Sickle Cell Disease, Heart Disease, St. Jude)
5. Support Friends/Families affected by Illnesses
6. Participate in a (COVID-Safe) Blood Drive and/or Health Fair
7. Highlight Monthly Health Initiatives (during formal meetings)

#### NATIONAL PROSTATE CANCER AWARENESS MONTH

Prostate cancer is a form of cancer that develops in the prostate gland. It is the second-leading cause of cancer deaths for men in the U.S. About 1 in 9 men will be diagnosed with prostate cancer in their lifetime (250,000 men/year). The prostate is a small walnut shaped gland in the pelvis of men (below the bladder). The prostate and seminal vesicles are a part of the male reproductive system that make fluid to bathe semen. Growths in the prostate can be benign (not cancer like benign prostatic hyperplasia/BPH) or malignant (cancer). Prostate cancer cells can spread by breaking away from a prostate tumor and traveling through blood vessels or lymph nodes to reach other parts of the body.

In its early stages, prostate cancer often has no symptoms. When symptoms do occur, they can be like those of an enlarged prostate or BPH. Symptoms of prostate cancer can be: dull pain in lower pelvic area, frequent urination, trouble urinating (pain, burning, weak flow), blood in urine, painful ejaculation, loss of appetite/weight. Risk factors include: age, ethnicity, family history, smoking, diet. The two main types of screening are: prostate-specific antigen (PSA) blood tests and digital rectal exams (DRE). For more information regarding (stages of prostate cancer and treatment), see [www.urologyhealth.org/urologic-conditions/prostate-cancer](http://www.urologyhealth.org/urologic-conditions/prostate-cancer).

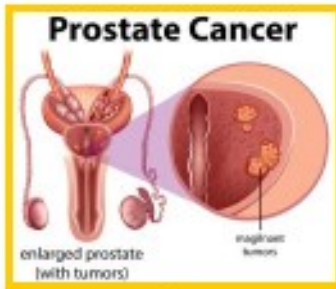
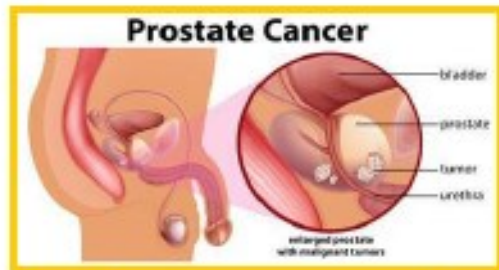
# Omega Psi Phi Fraternity, Incorporated

## MIGHTY NINTH DISTRICT

### Healthy Que Tips

Medical-Health Initiatives Committee

September 2022, Page 2



### Ninth District Healthy Events:

September is also Childhood Obesity Month, Healthy Aging Month, National Recovery Month, & National Sickle Cell Awareness Month (See Page 3)!

Please see Page 4 for Monkeypox information!

Have a **Healthy** and **Safe** Labor Day (September 5<sup>th</sup>)!



# Omega Psi Phi Fraternity, Incorporated

## MIGHTY NINTH DISTRICT

### Healthy Que Tips

Medical-Health Initiatives Committee

September 2022, Page 3

**WHAT is Sickle Cell?** Sickle cell makes round red blood cells turn into a shape like a sickle or a crescent moon by mutating a protein in red blood cells, called hemoglobin.

**NORMAL RED BLOOD CELL**

- Healthy
- Round
- Flexible
- Last 120 days

**SICKLE CELL**

- Stiff
- Sticky
- Last 13-20 days

Sickled blood cells get stuck in the small blood vessels causing tissue damage and severe pain.

## (SICKLE CELL)

Disease *and its facts*

**Sickle Cell or Malaria?** Carrying the sickle cell gene is an evolutionary advantage against malaria; the gene prevents the malaria parasite from fully invading red blood cells.

**HOW do you get it?** Sickle cell is genetic, meaning you can only be born with it and it is not contagious.

Each parent randomly gives their baby one of their hemoglobin genes.

Unaffected "Carrier" Mother

Unaffected "Carrier" Father

25% chance

50% chance

25% chance

Unaffected

Unaffected "Carrier"

Unaffected

Unaffected

**Global distribution of the sickle cell gene.**

Sickle cell is one of the most common genetic disorders in the world.

**WHO has Sickle Cell?** People of all races and ethnicities can inherit sickle cell. But it is more common in people of African, Southeast Asian, and Mediterranean heritage.

**WHEN to seek emergency?**

- Unexplained episodes of severe pain, such as pain in the abdomen, chest, bones or joints.
- Swelling in the hands or feet.
- Abdominal swelling, especially if the area is tender to touch.
- People with sickle cell anemia have an increased risk of infection, and fever can be the first sign of an infection.
- Pale skin or nail beds.
- Yellow tint to the skin or whites of the eyes.
- Any signs or symptoms of stroke. If you notice any one-sided paralysis or weakness in the face, arms or legs, confusion, trouble walking or talking, sudden vision problems or unexplained numbness, or a headache, call 911 or your local emergency number right away.

**1** out of 500 African-Americans births have sickle cell disease

**1** out of 30,000 Hispanic-Americans births have sickle cell disease

**1** out of 12 African-Americans carry the sickle cell trait

**SHOW SUPPORT**

**SPREAD AWARENESS**

**300,000** babies worldwide are born with sickle cell disease every year.

**100,000** people have sickle cell in the USA United States.

### NATIONAL SICKLE CELL AWARENESS MONTH

Sickle Cell Disease (SCD) is a group of inherited red blood cell disorders. Healthy red blood cells are round, and they move through small blood vessels to carry oxygen to all parts of the body. In someone who has SCD, the red blood cells become hard and sticky and look like a C-shaped farm tool called a "sickle". The sickle cells die early, which causes a constant shortage of red blood cells. Also, when they travel through small blood vessels, they get stuck and clog the blood flow. This can cause pain and other serious problems such as infection, acute chest syndrome, vision loss, and stroke.

SCD is a genetic condition that is present at birth. It is inherited when a child receives two sickle cell genes—one from each parent. SCD is diagnosed with a simple blood test. It most often is found at birth during routine newborn screening tests at the hospital. Because children with SCD are at an increased risk of infection and other health problems, early diagnosis and treatment are important. There is no single best treatment for all people with SCD. Treatment options are different for each person depending on the symptoms. For more info, see [www.cdc.gov/ncbddd/sicklecell/facts.html](http://www.cdc.gov/ncbddd/sicklecell/facts.html)

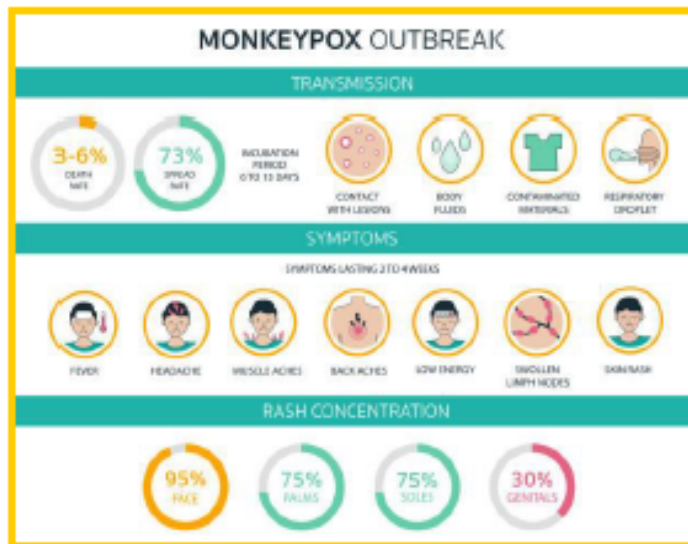
# Omega Psi Phi Fraternity, Incorporated

## MIGHTY NINTH DISTRICT

### Healthy Que Tips

Medical-Health Initiatives Committee

September 2022, Page 4



#### MONKEYPOX VIRUS

Monkeypox is a rare disease caused by infection with the monkeypox virus. Monkeypox virus is part of the same family of viruses as variola virus, the virus that causes smallpox. Monkeypox symptoms are similar to smallpox symptoms, but milder, and monkeypox is rarely fatal. People with monkeypox get a rash that may be located on or near the genitals or anus and could be on other areas like the hands, feet, chest, face, or mouth. Other symptoms of monkeypox can include: fever, chills, swollen lymph nodes, exhaustion, muscle aches and backache, headache, respiratory symptoms.

Monkeypox symptoms usually start within 3 weeks of exposure to the virus. If someone has flu-like symptoms, they will usually develop a rash 1-4 days later. Monkeypox can be spread from the time symptoms start until the rash has healed, all scabs have fallen off, and a fresh layer of skin has formed. The illness typically lasts 2-4 weeks.

Monkeypox can spread to anyone through close, personal, often skin-to-skin contact, including: direct contact with monkeypox rash, scabs, or body fluids from a person (can happen during intimate/sexual contact – hugging, kissing, massaging, face to face contact), touching contaminated objects, fabrics, surface, or contact with respiratory secretions. For information regarding prevention and treatment, please visit [www.cdc.gov/poxvirus/monkeypox/index.html](http://www.cdc.gov/poxvirus/monkeypox/index.html)



## CONTACT US

For more information on Rho Phi Chapter send an email to:

Bro. Keith Taylor/Chapter Reporter: [reporter@rhophi.org](mailto:reporter@rhophi.org)

Visit us on the web:

<https://rhophi.org>

Or the chapter's social media sites:

Facebook: <https://www.facebook.com/rhophinola>

Twitter: <https://twitter.com/RhoPhiOPP>

Instagram: <https://www.instagram.com/rhophiomegas>